

## Two biomarker-directed randomized trials in European and Chinese patients with nonsmall-cell lung cancer: the BRCA1-RAP80 Expression Customization (BREC) studies<sup>†</sup>

T. Moran<sup>1,†</sup>, J. Wei<sup>2,†</sup>, M. Cobo<sup>3</sup>, X. Qian<sup>2</sup>, M. Domine<sup>4</sup>, Z. Zou<sup>2</sup>, I. Bover<sup>5</sup>, L. Wang<sup>2</sup>, M. Provencio<sup>6</sup>, L. Yu<sup>2</sup>, I. Chaib<sup>1</sup>, C. You<sup>7</sup>, B. Massuti<sup>8</sup>, Y. Song<sup>9</sup>, A. Vergnenegre<sup>10</sup>, H. Lu<sup>11</sup>, G. Lopez-Vivanco<sup>12</sup>, W. Hu<sup>2</sup>, G. Robinet<sup>13</sup>, J. Yan<sup>2</sup>, A. Insa<sup>14</sup>, X. Xu<sup>15</sup>, M. Majem<sup>16</sup>, X. Chen<sup>17</sup>, R. de las Peñas<sup>18</sup>, N. Karachaliou<sup>19</sup>, M. A. Sala<sup>20</sup>, Q. Wu<sup>21</sup>, D. Isla<sup>22</sup>, Y. Zhou<sup>21</sup>, N. Baize<sup>23</sup>, F. Zhang<sup>24</sup>, J. Garde<sup>25</sup>, P. Germonpre<sup>26</sup>, S. Rauh<sup>27</sup>, H. ALHusaini<sup>28</sup>, M. Sanchez-Ronco<sup>29</sup>, A. Drozdowskyj<sup>30</sup>, J. J. Sanchez<sup>31</sup>, C. Camps<sup>32</sup>, B. Liu<sup>2</sup> & R. Rosell<sup>\*,33,34,35</sup> on behalf of the Spanish Lung Cancer Group, the French Lung Cancer Group and the Comprehensive Cancer Centre of Drum Tower Hospital in Nanjing

<sup>1</sup>Catalan Institute of Oncology, Medical Oncology Service, Hospital Germans Trias i Pujol, Badalona, Spain; <sup>2</sup>The Comprehensive Cancer Centre, Affiliated Drum Tower Hospital of Nanjing University Medical School, Nanjing, China; <sup>3</sup>Medical Oncology Service, Hospital Carlos Haya, Malaga; <sup>4</sup>Medical Oncology Service, Fundacion Jimenez Diaz, Madrid; <sup>5</sup>Medical Oncology Service, Hospital Son Llatzer, Palma de Mallorca; <sup>6</sup>Medical Oncology Service, Hospital Puerta de Hierro, Madrid, Spain; <sup>7</sup>Department of Oncology, Suqian General Hospital, Suqian, China; <sup>8</sup>Medical Oncology Service, Hospital General de Alicante, Alicante, Spain; <sup>9</sup>Department of Pneumology, Jinling Hospital, Nanjing, China; <sup>10</sup>Service de Pathologie Respiratoire et d'Allergologie, CHU Limoges, Limoges, France; <sup>11</sup>Department of Pneumology, Taizhou General Hospital, Taizhou, China; <sup>12</sup>Medical Oncology Service, Hospital de Cruces, Bilbao, Spain; <sup>13</sup>Service Pneumologie, CHU Brest, Brest, France; <sup>14</sup>Medical Oncology Service, Hospital Clínico de Valencia, Valencia, Spain; <sup>15</sup>Department of Pneumology, Northern Jiangsu People's Hospital, Yangzhou, China; <sup>16</sup>Medical Oncology Service, Hospital Sant Pau, Barcelona, Spain; <sup>17</sup>Department of Oncology, Huaian General Hospital, Huaian, China; <sup>18</sup>Medical Oncology Service, Hospital Provincial de Castellon, Castellon, Spain; <sup>19</sup>Translational Research Unit, Dr Rosell Oncology Institute, Quiron-Dexeus University Hospital, Barcelona; <sup>20</sup>Medical Oncology Service, Hospital de Basurto, Bilbao, Spain; <sup>21</sup>Department of Oncology, Yixin General Hospital, Yixin, China; <sup>22</sup>Medical Oncology Service, Hospital Lozano Blesa, Zaragoza, Spain; <sup>23</sup>Department de Pneumologie, CHU Angers, Angers, France; <sup>24</sup>Department of Oncology, Maanshan General Hospital, Maanshan, China; <sup>25</sup>Medical Oncology Service, Hospital Arnau de Vilanova, Valencia, Spain; <sup>26</sup>Department of Pulmonary Medicine, Antwerp University Hospital, Edegem, Belgium; <sup>27</sup>Department of Internal Medicine and Oncology, Centre Hospitalier Emile Mayrisch, Luxembourg; <sup>28</sup>Oncology Center, King Faisal Cancer Center, Riyadh, Saudi Arabia; <sup>29</sup>Department of Health and Medicosocial Sciences, University of Alcalá, Madrid; <sup>30</sup>DMBS, PIVOTAL SL, Madrid; <sup>31</sup>Department of Preventive Medicine, Autonomous University of Madrid, Madrid; <sup>32</sup>Medical Oncology Service, Hospital General de Valencia, Valencia; <sup>33</sup>Catalan Institute of Oncology, Cancer Biology and Precision Medicine Program, Hospital Germans Trias i Pujol, Badalona; <sup>34</sup>MORE Foundation, Barcelona, Spain; <sup>35</sup>Cancer Therapeutic Innovation Group, New York, USA

Received 12 June 2014; revised 28 July 2014 and 18 August 2014; accepted 19 August 2014

**Background:** In a Spanish Lung Cancer Group (SLCG) phase II trial, the combination of BRCA1 and receptor-associated protein 80 (RAP80) expression was significantly associated with outcome in Caucasian patients with nonsmall-cell lung cancer (NSCLC). The SLCG therefore undertook an industry-independent collaborative randomized phase III trial comparing nonselected cisplatin-based chemotherapy with therapy customized according to BRCA1/RAP80 expression. An analogous randomized phase II trial was carried out in China under the auspices of the SLCG to evaluate the effect of BRCA1/RAP80 expression in Asian patients.

**Patients and methods:** Eligibility criteria included stage IIIB–IV NSCLC and sufficient tumor specimen for molecular analysis. Randomization to the control or experimental arm was 1 : 1 in the SLCG trial and 1 : 3 in the Chinese trial.

\*Correspondence to: Dr Rafael Rosell, Catalan Institute of Oncology, Hospital Germans Trias i Pujol, Ctra Canyet, s/n, 08916 Badalona, Spain. Tel: +34-93-497-89-25; Fax: +34-93-497-89-50; E-mail: rosell@iconcologia.net

<sup>†</sup>These studies have previously been presented in part at the ASCO 2013 Annual Meeting, the ESMO-ECCO 2013 Annual Meeting and the IASLC 2013 World Conference on Lung Cancer

<sup>†</sup>Both authors are co-first authors of this manuscript.

In both trials, patients in the control arm received docetaxel/cisplatin; in the experimental arm, patients with low RAP80 expression received gemcitabine/cisplatin, those with intermediate/high RAP80 expression and low/intermediate BRCA1 expression received docetaxel/cisplatin, and those with intermediate/high RAP80 expression and high BRCA1 expression received docetaxel alone. The primary end point was progression-free survival (PFS).

**Results:** Two hundred and seventy-nine patients in the SLCG trial and 124 in the Chinese trial were assessable for PFS. PFS in the control and experimental arms in the SLCG trial was 5.49 and 4.38 months, respectively [log rank  $P = 0.07$ ; hazard ratio (HR) 1.28;  $P = 0.03$ ]. In the Chinese trial, PFS was 4.74 and 3.78 months, respectively (log rank  $P = 0.82$ ; HR 0.95;  $P = 0.82$ ).

**Conclusion:** Accrual was prematurely closed on the SLCG trial due to the absence of clinical benefit in the experimental over the control arm. However, the BREC studies provide proof of concept that an international, nonindustry, biomarker-directed trial is feasible. Thanks to the groundwork laid by these studies, we expect that ongoing further research on alternative biomarkers to elucidate DNA repair mechanisms will help define novel therapeutic approaches.

**Trial registration:** NCT00617656/GECP-BREC and ChiCTR-TRC-12001860/BREC-CHINA

**Key words:** biomarkers, BRCA1, clinical trial, customized chemotherapy, non-small-cell lung cancer, RAP80

## introduction

Since 1978, cisplatin has been the foundation of chemotherapy for nonsmall-cell lung cancer (NSCLC). However, in unselected patients, response rates are only 15%–30% and median survival is 10–12 months, while the majority of patients suffer severe side-effects with little therapeutic benefit [1]. The reaction of cisplatin with DNA produces DNA interstrand cross-links, which are repaired by excision repair cross-complementation group 1 (ERCC1), indicating a possible role for ERCC1 in biomarker-directed therapy. Nevertheless, neither an early ERCC1-directed randomized trial by our group [2] nor a later study [3] showed a survival benefit for ERCC1-directed treatment over nonselected chemotherapy.

Breast cancer 1, early onset (BRCA1) plays a critical role in homologous recombination DNA repair [4]. Recent findings show that BRCA1-depleted cells are homologous recombination competent but still hypersensitive to interstrand cross-links, suggesting that BRCA1 has an additional upstream role in processing interstrand cross-links before double-strand break repair [5]. Experimental models have demonstrated that BRCA1 induces a 10–1000-fold increase in resistance to platinum but a dramatic sensitivity to paclitaxel, docetaxel and vinorelbine [6–8]. We observed that higher BRCA1 mRNA levels were associated with higher response and longer progression-free survival (PFS) in patients with NSCLC treated with docetaxel/gemcitabine [9]. However, in a Spanish Lung Cancer Group (SLCG) phase II BRCA1 biomarker-directed study (ClinicalTrials.gov NCT00883480), where patients were treated with cisplatin/gemcitabine, cisplatin/docetaxel or single-agent docetaxel, we found no differences in survival according to BRCA1 levels [10].

Receptor-associated protein 80 (RAP80) plays a major role in homologous recombination and is associated with several proteins [11], including BRCA1 [4]. In the SLCG phase II study, survival was influenced by RAP80 mRNA levels, and in patients with low levels of both BRCA1 and RAP80 receiving cisplatin plus gemcitabine, median survival was longer than 26 months [10]. Similar results were later found in a retrospective analysis of patients treated with platinum plus either gemcitabine or pemetrexed, where median survival was not reached in patients with low levels of both BRCA1 and RAP80 [12].

Despite evidence that BRCA1 and RAP80 expression affect chemotherapy outcome in European NSCLC patients [9, 10, 12],

this combinatory effect has not been examined in Chinese NSCLC patients, although one study in Chinese patients found that BRCA1 expression correlated with *in vitro* chemosensitivity to cisplatin and docetaxel in malignant effusions of NSCLC and gastric cancer patients [13]. In a more recent study in Chinese gastric cancer patients, higher BRCA1 expression levels were associated with longer overall survival (OS) to second-line docetaxel ( $P = 0.006$ ), while no correlation between RAP80 expression and survival was observed [14].

Based on our findings in the phase II study [10], in cooperation with the French Lung Cancer Group (FLCG), the SLCG undertook the BRCA1-RAP80 Expression Customization (BREC) study, an independent, nonindustry, randomized phase III biomarker-directed clinical trial in advanced NSCLC comparing nonselected cisplatin-based chemotherapy with therapy customized according to BRCA1 and RAP80 levels (NCT00617656/GECP-BREC). At the same time, in order to examine the potential effect of BRCA1 and RAP80 in Asian patients, an analogous phase II randomized study was carried out in China under the auspices of the SLCG (ChiCTR-TRC-12001860/BREC-CHINA).

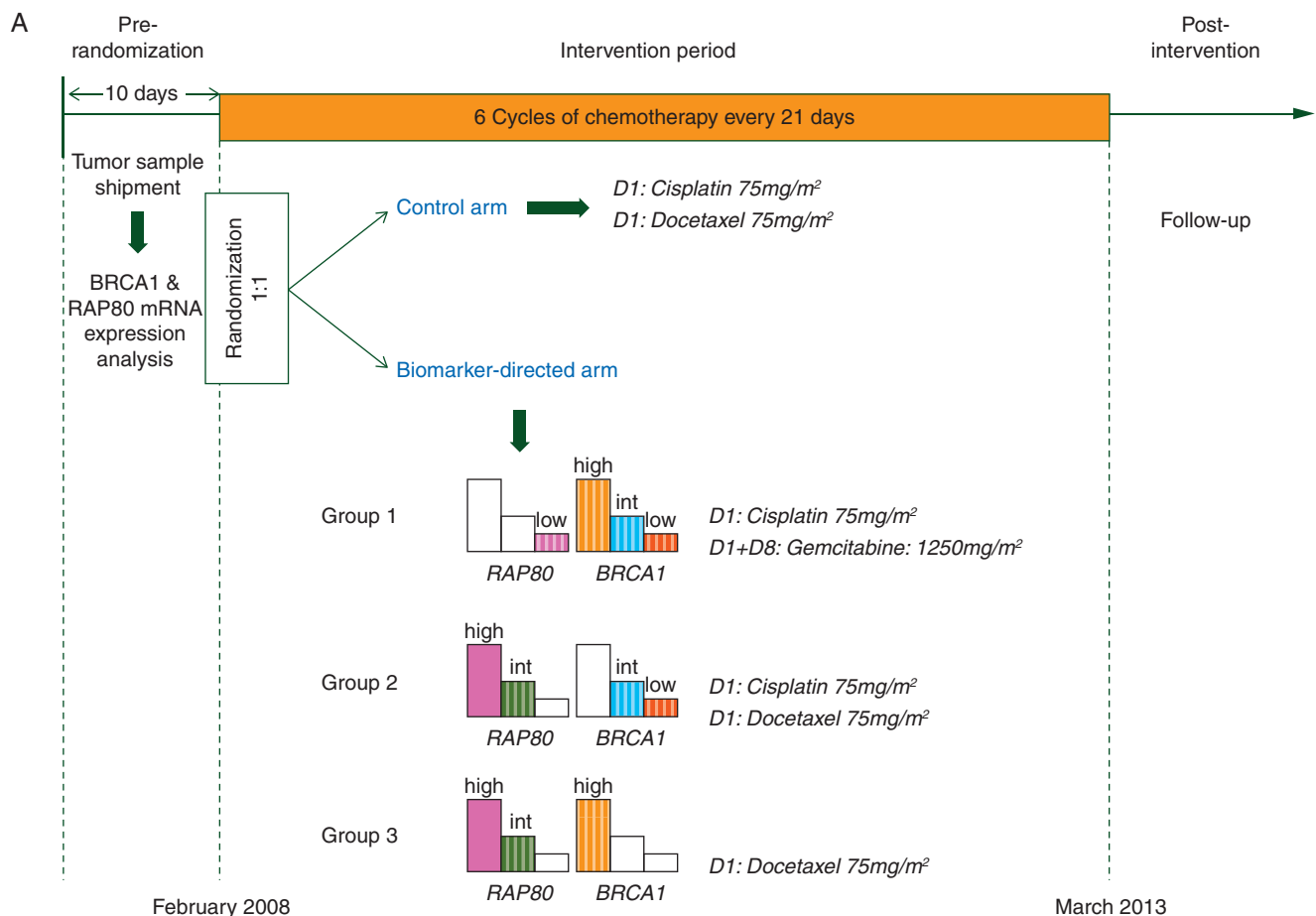
## patients and methods

### study design and participants

The SLCG randomized phase III clinical trial was conducted at 72 sites in Spain, France, Belgium, Luxembourg and Saudi Arabia from February 2008 to March 2013. The Chinese randomized phase II clinical trial was conducted at 14 sites from October 2010 to February 2013. Inclusion criteria are shown in supplementary Material, available at *Annals of Oncology* online, and in the protocols.

Sample size was based on the comparison of a control and an experimental arm for the primary end point of PFS, calculated from the time of randomization to progression or death. Secondary end points were OS, calculated from the time of randomization to death, response rate according to Response Evaluation Criteria in Solid Tumors (RECIST) [15], toxicities according to the National Cancer Institute Common Terminology Criteria for Adverse Events v 3.0, and translational research, including the study of other potential genetic markers of outcome. Since the primary end point was PFS in the control versus experimental arms, all subcomparisons between arms or within subgroups were considered exploratory.

The protocols were approved by the institutional review board or independent ethics committee at each participating site and complied with the International Ethical Guidelines for Biomedical Research Involving Human



**Figure 1.** Study design and patient disposition in the SLCG and Chinese studies. (A) During the 10-day initial period, BRCA1 and RAP80 mRNA expression was analyzed, and if the analysis was successful, patients were randomized 1 : 1 in the SLCG study and 1 : 3 in the Chinese study to either the control or biomarker-directed experimental arm. (B) Patient disposition showing registration, randomization and follow-up of the patients in the SLCG study. Criteria for inclusion in the per-protocol population (assessable patient set) included reception of at least one dose of the study drug and no major protocol violation. Of the 1116 patients who were assessed for eligibility, 734 did not enroll. The main reason for this seemingly high failure rate was an inadequate tumor specimen in 504 patients (45%), which had been foreseen in the protocol. Of 382 randomized patients, 103 were not eligible for inclusion in the per-protocol population. Eighty-seven patients were randomized just before the cutoff for the interim analysis and did not have data available for analysis. An additional eight patients were not included due to inclusion error, and another eight patients did not receive any study treatment. (C) Patient disposition showing registration, randomization and follow-up of the patients in the Chinese study.

Subjects, Good Clinical Practice guidelines, the Declaration of Helsinki and local laws. All patients provided their written informed consent.

In both trials, an initial 10-day period was allocated for the shipment of tumor samples and the analysis of BRCA1 and RAP80. Patients in whom molecular analyses were successful were then randomized for treatment (Figure 1A). Randomization was carried out centrally and automatically by generation of randomized permuted blocks. Patients in both arms were stratified according to histology, Eastern Cooperative Oncology Group (ECOG) performance status (PS), RAP80 expression levels and BRCA1 expression levels.

Patients in the SLCG trial were randomly assigned in a 1 : 1 ratio to either the control or the experimental arm. Patients in the control arm received docetaxel (75 mg/m<sup>2</sup>) plus cisplatin (75 mg/m<sup>2</sup>) on day 1. In the experimental arm, patients with low RAP80 expression and any level of BRCA1 expression (group 1) received gemcitabine (1250 mg/m<sup>2</sup>) on days 1 and 8 plus cisplatin (75 mg/m<sup>2</sup>) on day 1; patients with intermediate or high RAP80 expression and low or intermediate BRCA1 expression (group 2) received docetaxel (75 mg/m<sup>2</sup>) plus cisplatin (75 mg/m<sup>2</sup>) on day 1; patients with

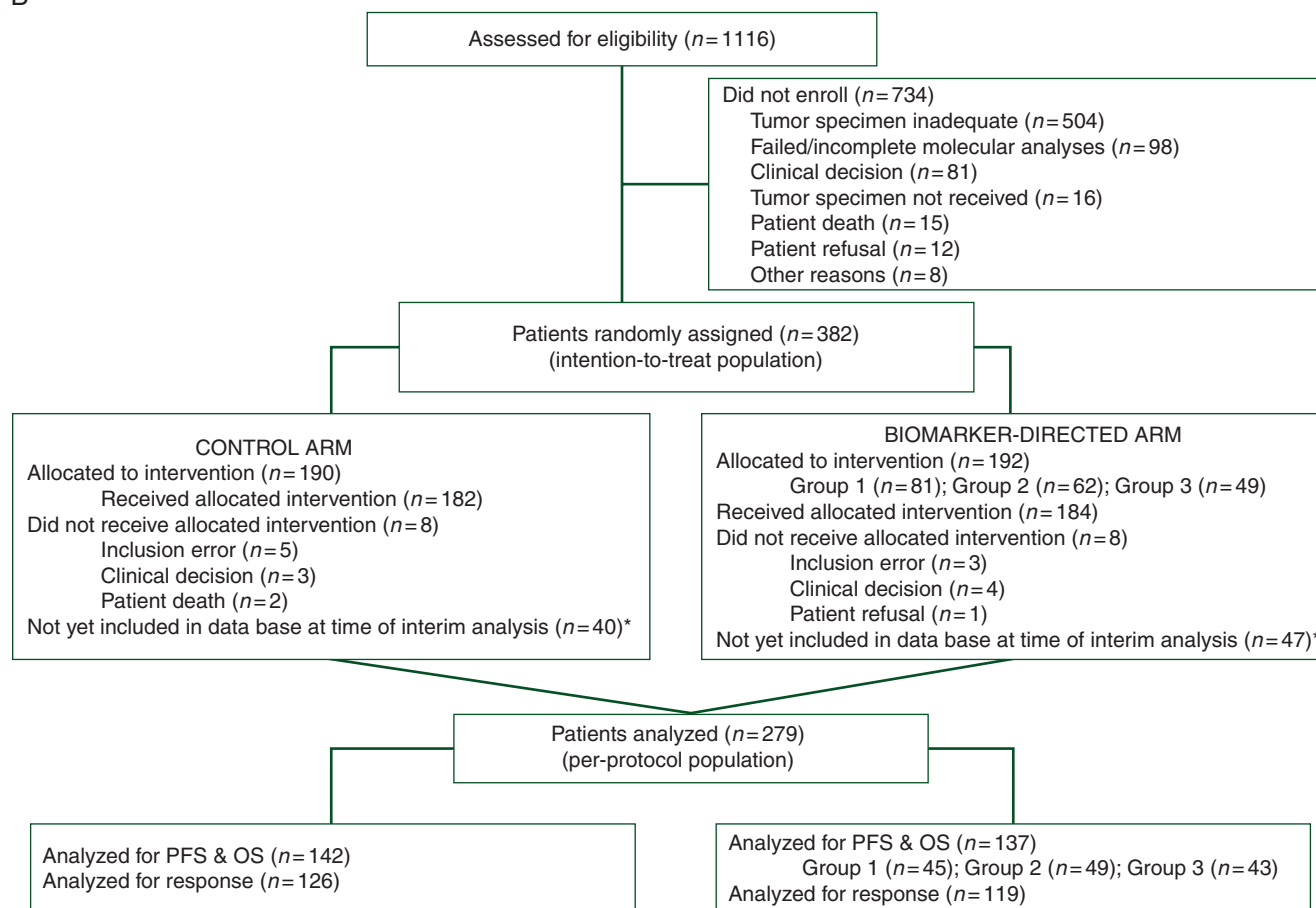
intermediate or high RAP80 expression and high BRCA1 expression (group 3) received docetaxel (75 mg/m<sup>2</sup>) on day 1. All cycles were 21 days.

Patients in the Chinese trial were randomized in a 1 : 3 ratio to either the control or the experimental arm. Treatment regimens were the same as in the SLCG study, but dosages were adjusted to standard doses for the Chinese population (docetaxel 60–75 mg/m<sup>2</sup>; gemcitabine 1000 mg/m<sup>2</sup>).

### molecular analysis

BRCA1 and RAP80 gene expression were analyzed in RNA isolated from paraffin-embedded tumor tissues. A hematoxylin/eosin-stained slice was examined by the pathologist to select the tumor area. In Spain, two 4- $\mu$ m slices were mounted on special slides (Pem-Membrane slides, Palm, Oberlensheim, Germany) for laser capture microdissection (CAPmover Microdissector, Carl Zeiss Microimaging, Barcelona, Spain) to ensure a minimum of 90% of tumor cells. In China, two 5- $\mu$ m-thick slices per block with at least 10 mm<sup>2</sup> of tumor area were macrodissected to ensure a minimum of 80% of tumor cells.

B



\*These patients were randomized shortly before the interim analysis was performed and had not yet been included in the data base.

Fig. 1 Continued

RNA extraction, retro transcription and real-time PCR analysis were carried out as described in the Appendix. Specific primers and probe for each gene expression were designed according to the Ref Seq (<http://www.ncbi.nlm.nih.gov/entrez/query.fcgi?db=gene>) using Primer Express 2.0 Software (Applied Biosystems, Foster City, CA) (supplementary Table S1, available at *Annals of Oncology* online). Quantification of gene expression was carried out using the ABI Prism 7900HT Sequence Detection System (Applied Biosystems). (Further details are provided in supplementary Material, available at *Annals of Oncology* online.)

### statistical analysis

In the phase III SLCG study, we estimated that 372 events would be needed for the study to have a power of 90% to detect a hazard ratio (HR) of 1.50 (median PFS of 7.8 months in the experimental versus 5.2 months in the control arm), using a two-sided log-rank test with significance set at 0.01. With a constant enrollment over 15 months and assuming an overall loss of 10% after randomization, a total of 480 patients would need to be randomized. An interim analysis was scheduled when 50% of progression events (186) had occurred.

In the phase II Chinese study, assuming an exponential model for PFS, a total of 72 events would be required for the study to have a power of 80% to detect a HR of 2.80. With a constant enrollment over 14 months and

assuming a 5% loss after randomization, a total of 124 subjects would need to be randomized in the Chinese trial.

PFS and OS were estimated with the Kaplan–Meier method and compared with a two-sided log-rank test. A Cox regression analysis was used to calculate HRs with their 95% confidence intervals (CIs), both raw and adjusted for random stratification factors. Response rates were calculated using the Pearson-Clopper method. Differences between baseline characteristics and treatment arms were compared with either the two-sided Fisher's exact test or the  $\chi^2$  test for categorical variables and with the student's *t*-test for age.

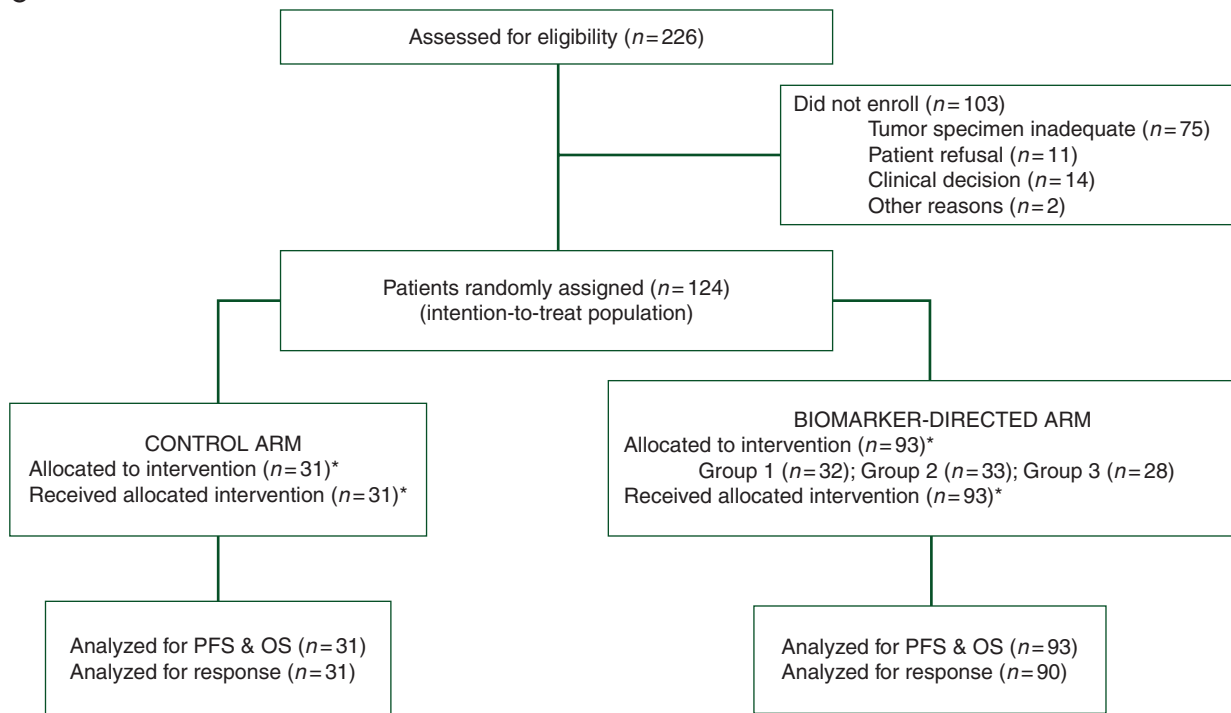
All analyses were two-sided with a 5% significance level and were carried out with SPSS version 19 and SAS version 9.2. (Complete details are shown in supplementary Material, available at *Annals of Oncology* online.)

## results

### patients and treatment

In the SLCG randomized phase III trial, 1116 patients were assessed for eligibility. At the time of data cutoff (15 October 2012), 382 had been randomized, 279 of whom were included in the per-protocol population: 142 in the control arm and 137 in the experimental arm (Figure 1B). Baseline characteristics were well balanced between the two arms with the exception of sex

C



\*All patients received the allocated intervention and were eligible for analysis; hence 124 were included in the per-protocol population.

Fig. 1 Continued

( $P = 0.05$ ) (Table 1, supplementary Table S2, available at *Annals of Oncology* online).

In the Chinese randomized phase II trial, 226 patients were assessed for eligibility. At the time of data cutoff (10 July 2013), 124 had been randomized—31 to the control arm and 93 to the experimental arm (Figure 1C). Baseline characteristics were well balanced between the two arms (Table 1, supplementary Table S2, available at *Annals of Oncology* online).

Information on EGFR mutations is provided in supplementary Material, available at *Annals of Oncology* online.

### progression-free survival

In the SLCG trial, of the 279 patients included in the per-protocol population, 215 (58% of planned events) had progressed or died at the time of the interim analysis. PFS was 5.3 months (95% CI 4.71–5.88) for all patients, 5.49 months (95% CI 5.08–5.91) for the control arm and 4.38 months (95% CI 3.27–5.48) for the experimental arm (log rank  $P = 0.07$ ; raw HR for progression in the experimental arm 1.28; 95% CI 0.98–1.67;  $P = 0.07$ ; adjusted HR 1.35; 95% CI 1.02–1.78;  $P = 0.03$ ) (Figure 2A). PFS was 5.43 months in group 1, 5.49 months in group 2, and 2.50 months in group 3 (log rank  $P$  for comparison of control arm and three experimental groups = 0.003). A harmful effect was observed for group 3 (patients with high/intermediate RAP80 and high BRCA1 levels receiving single-agent docetaxel) compared with the control arm (adjusted HR, 2.65; 95% CI 1.66–4.24;  $P < 0.001$ ) (Figure 2B, supplementary Table S3, available at *Annals of Oncology* online).

Of the 124 patients in the per-protocol population of the Chinese trial, 112 had progressed or died at the time of this analysis. PFS was 3.91 months (95% CI 2.8–5.03) for the entire cohort, 4.74 months (95% CI 1.97–7.5) for the control arm and 3.78 months (95% CI 2.52–5.04) for the experimental arm (log rank  $P = 0.82$ ; raw and adjusted HRs, 0.95;  $P = 0.82$ ) (Figure 2C). PFS was 5.59 months for group 1, 3.78 months for group 2, and 12.73 months for group 3 (log rank  $P$  for comparison of control arm and three experimental groups = 0.55) (Figure 2D, supplementary Table S3, available at *Annals of Oncology* online).

### overall survival

In the SLCG trial, OS was 10.16 months (95% CI 8.32–12.01) for all patients, 12.66 months (95% CI 10.07–15.26) in the control arm and 8.52 months (95% CI 6.41–10.63) in the experimental arm (log rank  $P = 0.006$ ; raw HR, 1.55; 95% CI 1.13–2.12;  $P = 0.006$ ; adjusted HR, 1.85; 95% CI 1.33–2.57;  $P < 0.001$ ). A harmful effect was again observed for group 3 (adjusted HR, 2.54; 95% CI 1.49–4.34;  $P = 0.001$ ) (supplementary Table S3 and Figure S1a and b, available at *Annals of Oncology* online).

In the Chinese trial, OS was 11.74 months (95% CI 7.94–15.55) for all 124 patients, 10.82 months (95% CI 2.32–19.33) in the control arm and 11.74 months (95% CI 8.06–15.43) in the experimental arm (log rank  $P = 0.94$ ; raw HR 0.98; 95% CI 0.57–1.69;  $P = 0.94$ ; adjusted HR 0.99; 95% CI 0.57–1.76;  $P = 0.99$ ) (supplementary Table S3 and Figure S1c and d, available at *Annals of Oncology* online).



**Table 1.** Baseline characteristics of patients included in the per-protocol populations in the SLCG and Chinese studies

SLCG study (N = 279)				
	All patients (N = 279), n (%)	Control arm (N = 142), n (%)	Experimental arm (N = 137), n (%)	P
Age (years)				
Median (range)	62 (37–83)	62 (42–82)	63 (37–83)	0.37
Sex				
Female	52 (18.6)	33 (23.2)	19 (13.9)	0.05
Male	227 (81.4)	109 (76.8)	118 (86.1)	
ECOG PS				
0	93 (33.3)	44 (31)	49 (35.8)	0.23
1	186 (66.7)	98 (69)	88 (64.2)	
Histology				
Adenocarcinoma	142 (50.9)	74 (52.1)	68 (49.6)	0.89
Large cell carcinoma	23 (8.2)	10 (7)	13 (9.5)	
Squamous cell carcinoma	99 (35.5)	50 (35.2)	49 (35.8)	
Other	15 (5.4)	8 (5.6)	7 (5.1)	
Smoking status				
Current smoker	74 (27.8)	38 (26.8)	36 (26.3)	0.71
Former smoker	179 (67.3)	89 (62.7)	90 (65.7)	
Never smoked	13 (4.9)	8 (5.6)	5 (3.7)	
Data unavailable	13 (4.9)	7 (4.9)	6 (4.4)	
Number of cycles				
Median (range)	4 (1–8)	5 (1–8)	4 (1–7)	0.30
Second-line treatment				
Yes	133 (47.7)	73 (51.4)	60 (43.8)	0.23
No	146 (52.3)	69 (48.6)	77 (56.2)	
Chinese study (N = 124)				
	All patients (N = 124), n (%)	Control arm (N = 31), n (%)	Experimental arm (N = 93), n (%)	P
Age (years)				
Median (range)	59 (28–78)	59 (31–74)	59 (28–78)	0.51
Sex				
Female	35 (28.2)	8 (25.8)	27 (29)	0.82
Male	89 (71.8)	23 (74.2)	66 (71)	
ECOG PS				
0	30 (24.2)	5 (16.1)	25 (26.9)	0.33
1–2	94 (75.8)	26 (83.9)	68 (73.1)	
Histology				
Squamous cell carcinoma	42 (33.9)	11 (35.5)	31 (33.3)	0.83
Nonsquamous cell carcinoma	82 (66.1)	20 (64.5)	62 (66.7)	
Smoking status				
Current/former smoker	77 (62.1)	21 (67.7)	56 (60.2)	0.53
Never smoked	47 (37.9)	10 (32.3)	37 (39.8)	
Number of cycles				
Median (range)	4 (1–6)	4 (1–6)	4 (1–6)	0.54
Second-line treatment				
Yes	68 (54.8)	17 (54.8)	51 (54.8)	0.99
No	56 (45.2)	14 (45.2)	42 (45.2)	

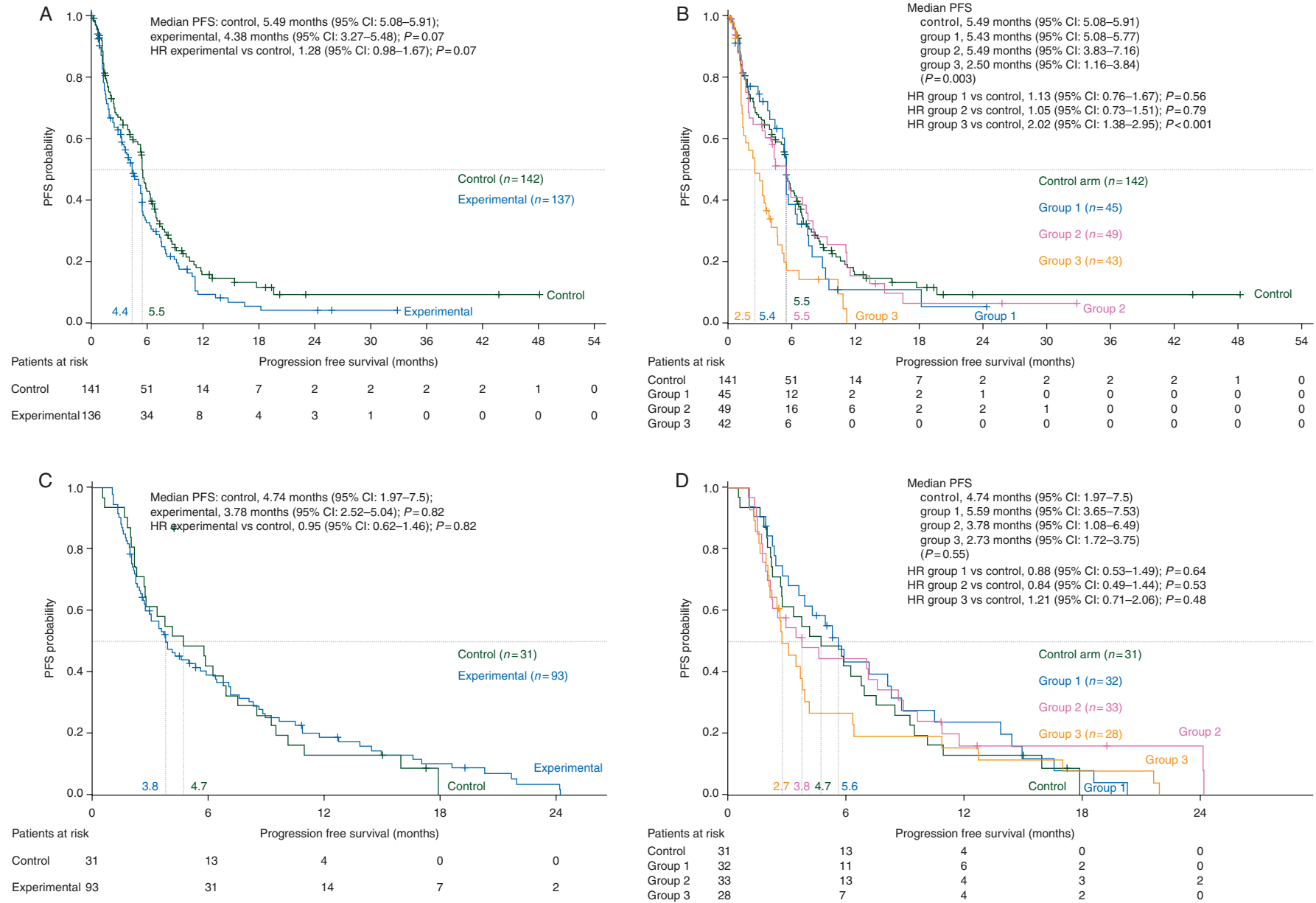
### other secondary end points

Information on response and toxicities is provided in supplementary Material and Table S4, available at *Annals of Oncology* online.

### subgroup analyses

Additional exploratory subgroup analyses of PFS were carried out in the SLCG trial using stratification and prognostic variables

to investigate the potential differential effect of clinical factors on outcome according to treatment arm. Complete details are shown in supplementary Material and Table S5 and Figure S2, available at *Annals of Oncology* online. In addition, given the markedly poor outcome observed in group 3 of the biomarker-directed arm (single-agent docetaxel), we compared this group of 43 patients with the 34 patients in the control arm having the same gene expression profile (high/intermediate RAP80 and



**Figure 2.** Progression-free survival. (A) In the SLCG study by treatment arm; (B) in the SLCG study comparing the control arm and each of the three biomarker-directed groups; (C) in the Chinese study by treatment arm; and (D) in the Chinese study comparing the control arm and each of the three biomarker-directed groups. Raw HRs are shown. HRs adjusted for stratification factors [histology (squamous versus non-squamous); ECOG PS (0 versus 1); RAP80 expression (low versus intermediate versus high); BRCA1 expression (low versus intermediate versus high)] can be found in Results section and in supplementary Table S3, available at *Annals of Oncology* online.

high BRCA1 expression). A significant benefit was observed for patients in the control arm compared with those in the experimental arm (PFS = 6.38 versus 2.5 months; log rank  $P < 0.0001$ ; HR 2.62;  $P = 0.001$ ). PFS for patients with the other two gene expression profiles did not differ significantly between the two arms (supplementary Table S6, available at *Annals of Oncology* online).

## discussion

The SLCG conducted a randomized, international, phase III trial in patients with advanced NSCLC with the objective of examining whether biomarker-directed chemotherapy based on BRCA1 and RAP80 expression levels would confer improved PFS compared with nonselected cisplatin-based chemotherapy. At the same time, a randomized phase II study was carried out in China under the auspices of the SLCG to ascertain whether the predictive role of BRCA1 and RAP80 expression observed in European patients would also hold true among Chinese patients. Our expectation was that our findings would validate previous data indicating a combinatory effect of BRCA1 and RAP80 expression on PFS and OS [10, 12]. However, the prespecified interim analysis of the SLCG study showed a detrimental effect in the biomarker-directed arm (HR for progression 1.35;  $P = 0.03$ ) and the SLCG phase III randomized trial was prematurely closed.

The detrimental effect observed in the experimental arm was especially marked in group 3, where patients received single-agent docetaxel (HR 2.65;  $P < 0.001$ ). One limitation of this study is that it is not possible to analyze the predictive role of the biomarkers since the two arms did not receive the same treatment, nor can we compare the effect of the different treatment regimens since they were administered to different patient populations. At the time of designing the studies, it was expected that patients with intermediate/high RAP80 and high BRCA1 expression would benefit from single-agent docetaxel, based on previous findings that BRCA1 expression induces sensitivity to antimicrotubule agents [6, 7] and that RAP80 regulates BRCA1 function [4], as well as on the results of the SLCG phase II trial [10]. However, since an exploratory analysis found a benefit for patients with this gene expression profile in the control arm, who received docetaxel/cisplatin, compared with the same group of patients in the experimental arm, who received docetaxel ( $P < 0.001$ ), we can speculate that the detrimental effect in the experimental arm may well have been partly due to the use of single-agent docetaxel. This potential harmful effect of monotherapy should be kept in mind when designing future clinical trials. One of the few previous studies comparing docetaxel with docetaxel/cisplatin as first-line treatment was carried out in unselected patients and reported a higher response rate for the combination regimen, but this did not translate into significantly longer PFS or OS [16].

Among the other two gene expression groups, there was no difference in PFS between the control and experimental arms, which may indicate that the predictive capacity previously reported for RAP80 expression [4, 10] seems to be only part of the complex molecular network influencing the BRCA1 model. BRCA1 plays a central but still enigmatic role in homologous recombination, and as part of the genetic analyses specified as a

secondary end point in the BREC protocol, we are now examining alternative biomarkers that could elucidate DNA repair mechanisms, including p53-binding protein 1 (53BP1) [17, 18] and other DNA damage response factors, such as RING finger protein 8 (RNF8) and RNF168 E3 ubiquitin ligases [19] (supplementary Figure S3, available at *Annals of Oncology* online).

The BREC studies were sponsored by the SLCG in collaboration with the FLCG and received no support from the pharmaceutical industry. Although 504 patients were not eligible for inclusion due to inadequate tumor specimens, this had been foreseen in the protocol, and the BREC studies provide proof of concept that an international, nonindustry, biomarker-directed trial is feasible. Moreover, the centralization of the gene expression analyses eliminated any potential interinstitutional variations in specimen processing and analysis. In addition, our unexpected negative findings highlight the importance of close clinical validation of preclinical findings before undertaking a major randomized clinical trial. We expect that thanks to the groundwork laid by the BREC studies, further research can help to define predictive models for chemotherapy outcome and contribute to therapeutic approaches of synthetic lethality [20, 21].

## acknowledgements

The authors thank the medical oncologists and investigators who participated in the trial, as well as the biologists, nurses, data managers and administrative staff that helped make this study possible (see Appendix).

## funding

Both studies were designed and sponsored by the SLCG. Work in Dr Rosell's laboratory is partially supported by grants from La Caixa Foundation and from Redes Temáticas de Investigación en Cáncer (grant number RD12/0036/0072). The Chinese study was partially supported by a grant from the National Natural Science Foundation of China (grant number 81220108023) and by Sanofi-China. None of these funding organizations had any input into the design of the studies, the collection of data or the decision to publish.

## disclosure

The authors have declared no conflicts of interest.

## references

1. Oliver TG, Mercer KL, Sayles LC et al. Chronic cisplatin treatment promotes enhanced damage repair and tumor progression in a mouse model of lung cancer. *Genes Dev* 2010; 24: 837–852.
2. Cobo M, Isla D, Massuti B et al. Customizing cisplatin based on quantitative excision repair cross-complementing 1 mRNA expression: a phase III trial in non-small-cell lung cancer. *J Clin Oncol* 2007; 25: 2747–2754.
3. Bepler G, Williams C, Schell MJ et al. Randomized international phase III trial of ERCC1 and RRM1 expression-based chemotherapy versus gemcitabine/carboplatin in advanced non-small-cell lung cancer. *J Clin Oncol* 2013; 31: 2404–2412.
4. Wang B, Matsuoka S, Ballif BA et al. Abraxas and RAP80 form a BRCA1 protein complex required for the DNA damage response. *Science* 2007; 316: 1194–1198.



5. Bunting SF, Callen E, Kozak ML et al. BRCA1 functions independently of homologous recombination in DNA interstrand crosslink repair. *Mol Cell* 2012; 46: 125–135.
6. Quinn JE, James CR, Stewart GE et al. BRCA1 mRNA expression levels predict for overall survival in ovarian cancer after chemotherapy. *Clin Cancer Res* 2007; 13: 7413–7420.
7. Quinn JE, Kennedy RD, Mullan PB et al. BRCA1 functions as a differential modulator of chemotherapy-induced apoptosis. *Cancer Res* 2003; 63: 6221–6228.
8. Rottenberg S, Nygren AO, Pajic M et al. Selective induction of chemotherapy resistance of mammary tumors in a conditional mouse model for hereditary breast cancer. *Proc Natl Acad Sci USA* 2007; 104: 12117–12122.
9. Boukovinas I, Papadaki C, Mendez P et al. Tumor BRCA1, RRM1 and RRM2 mRNA expression levels and clinical response to first-line gemcitabine plus docetaxel in non-small-cell lung cancer patients. *PLoS One* 2008; 3: e3695.
10. Rosell R, Perez-Roca L, Sanchez JJ et al. Customized treatment in non-small-cell lung cancer based on EGFR mutations and BRCA1 mRNA expression. *PLoS One* 2009; 4: e5133.
11. Yan J, Kim YS, Yang XP et al. Ubiquitin-interaction motifs of RAP80 are critical in its regulation of estrogen receptor alpha. *Nucleic Acids Res* 2007; 35: 1673–1686.
12. Bonanno L, Costa C, Majem M et al. The predictive value of BRCA1 and RAP80 mRNA expression in advanced non-small-cell lung cancer patients treated with platinum-based chemotherapy. *Ann Oncol* 2013; 24: 1130–1132.
13. Wang L, Wei J, Qian X et al. ERCC1 and BRCA1 mRNA expression levels in metastatic malignant effusions is associated with chemosensitivity to cisplatin and/or docetaxel. *BMC Cancer* 2008; 8: 97.
14. Wei J, Costa C, Ding Y et al. mRNA expression of BRCA1, PIAS1, and PIAS4 and survival after second-line docetaxel in advanced gastric cancer. *J Natl Cancer Inst* 2011; 103: 1552–1556.
15. Eisenhauer EA, Therasse P, Bogaerts J et al. New response evaluation criteria in solid tumours: revised RECIST guideline (version 1.1). *Eur J Cancer* 2009; 45: 228–247.
16. Georgoulas V, Ardanavani A, Agelidou A et al. Docetaxel versus docetaxel plus cisplatin as front-line treatment of patients with advanced non-small-cell lung cancer: a randomized, multicenter phase III trial. *J Clin Oncol* 2004; 22: 2602–2609.
17. Bunting SF, Callen E, Wong N et al. 53BP1 inhibits homologous recombination in Brca1-deficient cells by blocking resection of DNA breaks. *Cell* 2010; 141: 243–254.
18. Bonanno L, Costa C, Majem M et al. The predictive value of 53BP1 and BRCA1 mRNA expression in advanced non-small-cell lung cancer patients treated with first-line platinum-based chemotherapy. *Oncotarget* 2013; 4: 1572–1581.
19. Nakada S, Yonamine RM, Matsuo K. RNF8 regulates assembly of RAD51 at DNA double-strand breaks in the absence of BRCA1 and 53BP1. *Cancer Res* 2012; 72: 4974–4983.
20. Lord CJ, Ashworth A. The DNA damage response and cancer therapy. *Nature* 2012; 481: 287–294.
21. Rosell R, Bivona TG, Karachaliou N. Genetics and biomarkers in personalisation of lung cancer treatment. *Lancet* 2013; 382: 720–731.

## appendix

The following investigators participated in the BREC trials:

Belgium: B. Colinet, J. De Grève, P. Germonpré

China: H. Chen, X. Chen, J. Du, Y. Gao, J. Hu, W. Hu, W. Kong, L. Li, R. Li, X. Li, B. Liu, J. Liu, H. Lu, X. Qian, W. Ren, Y. Song, L. Wang, J. Wei, L. Wen, Q. Wu, X. Xiao, X. Xu, J. Yan, J. Yang, M. Yang, Y. Yang, J. Yin, C. You, L. Yu, X. Yue, F. Zhang, J. Zhang, Y. Zhou, L. Zhu, Z. Zou

France: N. Baize, P. Bombaron, C. Chouaid, E. Dansin, P. Fournel, G. Fraboulet, R. Gervais, S. Hominal, S. Kahlout, H. Lecaer, H. Lena, J. LeTret, C. Locher, O. Molinier, I. Monnet, G. Oliviero, G. Robinet, R. Schoot, P. Thomas, A. Vergnègre

Luxembourg: G. Berchem, S. Rauh

Saudi Arabia: H. Al Husaini

Spain: F. Aparisi, E. Arriola, I. Ballesteros, I. Barneto, R. Bernabé, A. Blasco, J. Bosch-Barrera, I. Bover, V. Calvo de Juan, C. Camps, E. Carcereny, S. Catot, M. Cobo, R. De las Peñas, M. Dómine, E. Felip, M. R. García-Campelo, C. García-Girón, R. García-Gómez, R. Garcia-Sevila, J. Garde, A. Gasco, J. Gil, J. L. González-Larriba, S. Hernando-Polo, E. Jantus, A. Insa, D. Isla, B. Jiménez, P. Lianes, R. López-López, A. López-Martín, G. López-Vivanco, J. A. Macias, M. Majem, J. L. Marti-Ciriquian, B. Massuti, R. Montoyo, D. Morales-Espinosa, T. Morán, M. A. Moreno, C. Pallares, M. Parera, R. Pérez-Carrión, R. Porta, M. Provencio, N. Reguart, R. Rosell, F. Rosillo, M. A. Sala, J. M. Sanchez, I. Sullivan, J. Terrasa, J. M. Trigo, J. Valdivia, N. Viñolas, S. Viteri

The following biologists, nurses, data managers and administrative staff helped make this study possible

Biologists: M. Botia-Castillo, J. L. Mate, M. Perez-Cano, J. L. Ramirez, B. Sanchez-Rodriguez, M. Taron, M. Tierno-Garcia

Data managers: E. Mijangos, J. Ocaña, E. Pereira, J. Shao, X. Sun

Research nurses and operations staff of the Spanish and French Lung Cancer Groups and the Comprehensive Cancer Centre of Drum Tower Hospital

Editorial assistance: R. O'Brate