

937P: Incidence of EGFR mutation and clinical characteristics of patients with non small cell lung cancer treated by surgery in France. Explore EGFR POst Surgery GFPC 06-2020

Auliac JB, Simoneau Y, Thomas P, Guissier F, Bylicki O, Curcio H, Swalduz A, Wislez M, Geier M, Letreut J, Decroisette C, Falchero L, Moreau D, Huchot E, de Chabot G, Bons H, Luppó A, Chouaid c, Greillier L .

1Pneumology Department, CHI - Centre Hospitalier Intercommunal de Créteil, Créteil, Cedex, France, 2Pneumology Department, CHU Limoges - Hopital Dupuytren, Limoges, France, 3Thoracic Surgery Department, Assistance Publique Hopitaux de Marseille, Marseille, France, 4Service de pneumologie, oncologie thoracique et soins intensifs respiratoires, CHU Rouen, Rouen, France, 5Pneumology Department, Hopital d'instruction des armées Sainte-Anne, Toulon, France, 6Oncology Department, Centre Francois Baclesse, Caen, France, 7Department of Pneumology, Comprehensive Cancer Centre Léon Bérard, Lyon, France, 8Pneumology department, Hopital Tenon AP-HP, Paris, Cedex, France, 9Cancerology Institute, CHRU Morvan Brest, Brest, France, 10Pneumology Department, Hopital Européen Marseille, Marseille, France, 11Pneumology Department, Le Centre Hospitalier Anney Genevois, Metz-Tessy, France, 12Pneumology Department, Hospital Center De Villefranche-Sur- Saône, Gleizé, France, 13Service de Chirurgie Thoracique et Cardio-Vasculaire, CHU Limoges - Hopital Dupuytren, Limoges, France, 14Pneumology Department, Centre Hospitalier Universitaire Felix-Guyon, Saint Denis, France, 15Pneumology Department, Centre Hospitalier Universitaire de Saint Pierre de la Réunion, Saint-Pierre, Reunion Islands, 16Oncology department, Centre Hospitalier Bretagne Atlantique, Vannes, France, 17UF de Pharmacogénétique et Oncologie Moléculaire, HEGP Biochimie, Paris, France, 18Service de génétique et biologie moléculaire, Hopital Cochin AP-HP, Paris, France, 19Department of Pneumology, CH Intercommunal de Créteil, Créteil, France, 20Multidisciplinary Oncology and Therapeutic Innovations, Hopital St. Marguerite Assistance Publique Hopitaux de Marseille, Marseille, France



Background :

There is few epidemiological and clinical data's on No Small Cell Lung Cancer (NSCLC) patients (pts) harboring EGFR mutations treated by surgery. Adaura study have shown benefit of adjuvant treatment by osimertinib.

Objective:

to describe in real world setting **incidence**, clinical and tumoral characteristics, mode of disease recurrence of EGFR mutated NSCLC pts treated by surgery.

Methods :

Retrospective multicentric study

Including consecutive pts with localized NSCLC treated by surgery between January 2018 and December 2019 in France. EGFR status was carried out retrospectively when not available in the medical chart

Disease free survival (DFS) have been defined as the time between surgery (date) and RECIST progression or death; duration of overall survival (OS) have been defined as the time between diagnosis (date of histology) onset and death.

Results:

Median follow up : 29.4 months

1165 consecutives pts in 16 centers screened



134 EGFR +

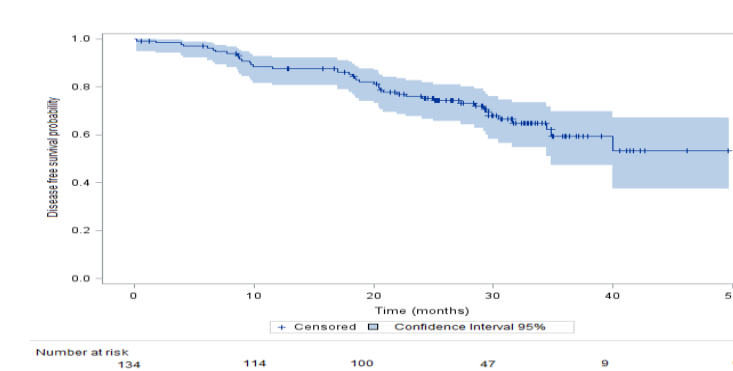
INCIDENCE : 11.5%

	all patients n=134	stage IA n=63	stage IB-IIIa n=68	Stage II-IIIa n=47
median DFS				
Mediane (IC 95%)	NR (34,9-NR)	NR (40-NR)	29,6(22,8-NR)	28,4(20,4-NR)
%DFS at				
12 months	87,7%	95,3%	80,9%	71,4%
18 months	85,3%	93,7%	77,9%	71,4%
24 months	76,1%	90,3%	62,3%	58,2%

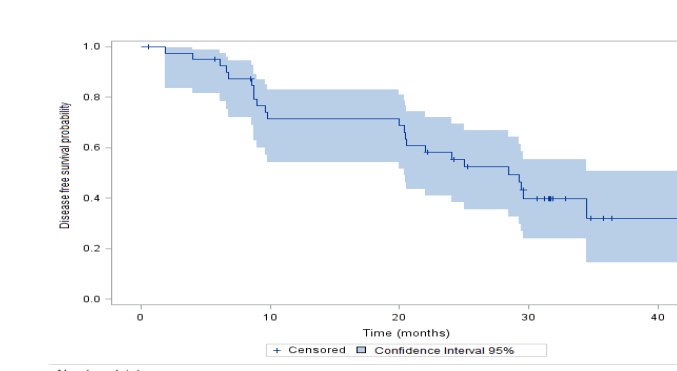
DFS : Disease Free Survival, NR not reach

	patients with relapse disease n, %
Stage IA n=63	9(14.2)
Stage IB n=22	3(13.6)
Stage IIA, IIB n=20	11 (55)
Stage IIIA n=26	15(58)

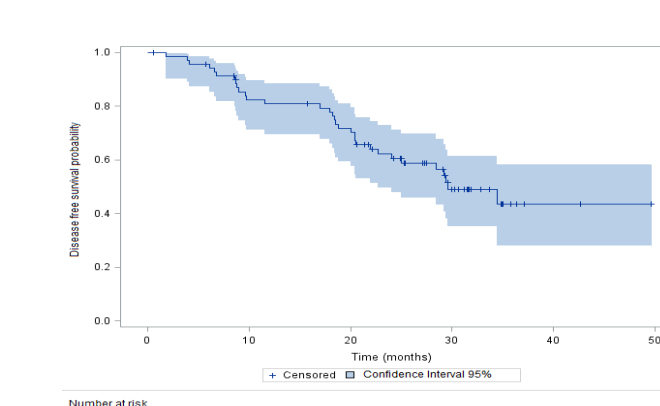
Disease free survival all pts



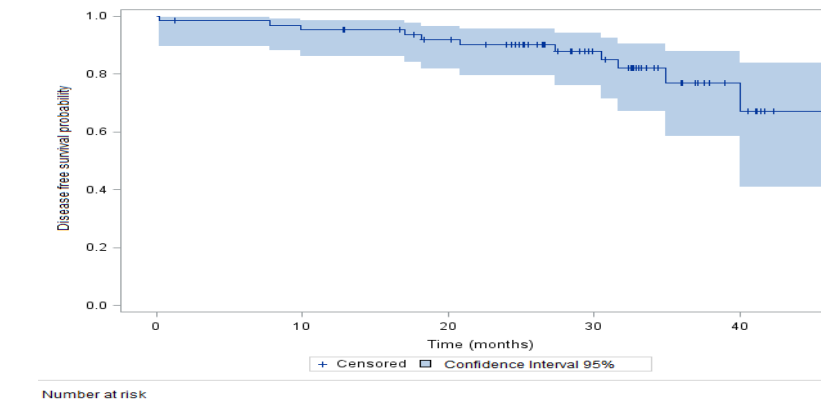
Disease free survival stage II-IIIa



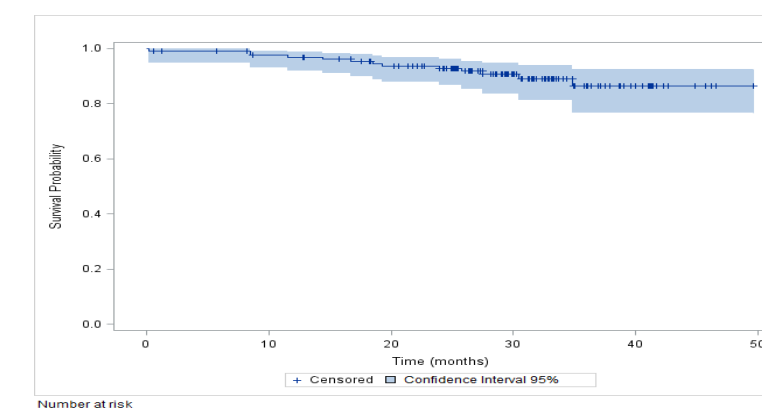
Disease free survival stage Ib-IIIa



Disease free survival stage IA



Overall survival: all pts



Conclusion:

Incidence of EGFR mutated operated patients is similar in France of advanced stages of NSCLC harboring EGFR mutation . Recurrence rate was high :more 10 % for very early stage (stage 1 A-B) and more 50 % for stage more advanced (IIA-B, IIIA).

	Clinical baseline characteristic EGFR + pts n=134	Clinical baseline characteristic patients with relapse disease n=38	
Sexe (n,%)	Male/female	51(38)/83(62)	16(42)/22(58)
Age years	Médian	68[36-88]	72.7[36-88]
Smoking status (n,%)	Formers-current smokers	34 (26)	9(24)
	Median Pack years	32	29
	Non smokers	100 (74)	29 (76)
Histological diagnosis before surgery (n,%)		63(47)	29(76)
Histology	Adenocarcinoma	129(96)	36 (93)
PDL 1 status (n=87) (n,%)			n=20
	0	60(68)	11(55)
	1-50%	21 (24)	6 (30)
	>50%	6 (7)	3(15)
EGFR status (n,%)	Exon 19	53(39.5)	12(31)
	Exon 21	53(39.5)	16(42)
	Exon 20	16 (12)	6(15)
	Exon 18	9 (7)	4(11)
	others	2(1.5)	0
Co mutations(n)	KRAS/HER2 /ALK/ROS 1	3/1/1/1	
surgery (n,%)	Wedge/segmentectomy lobectomy	5(4)/14(10)	1(2.5)/1(2.5)
	pneumonectomy	1(>1)	1(2.5)
	Complete lymph Node	129 (96)	36(95)
Resection quality (n,%)	R0	126(94)	36(95)
Staging post surgery (n,%)	Stade IA	63(47)	9 (23)
	Stade IB	22(16)	3(8)
	Stade IIA	5(4)	3 (8)
	Stade IIB	15(11)	8(21)
	Stade IIIA	26(20)	15(40)
	Stade IIIB	1(>1)	0
Adjuvant treatment (n,%)	Chemotherapy (platinum doublet)	27(20)	13(34)
	Radiotherapy	5(4)	0